

TealMover User's Manual



Program Version 1.30
Last Updated: August 16, 2002

Table of Contents

Description	1
Contents	1
Installing	1
Overview	2
Using the Program	2
File List Screen	2
Device Selection	2
File Filters	3
Custom File Filters	4
Settings	4
Data Display	5
File Selection and Navigation	6
Actions	6
Appendix A – Compatibility	7
Handera and Sony Clie	7
MemPlug	7
Appendix B - Revision History	7
Appendix C - Credits	8
Appendix D - Contact Info	8
Appendix E - Registering	8
Appendix F - Products	8
Appendix G - Disclaimer	10

Description

Thank you for trying TealMover. TealMover is a full file manager utility for Palm OS Organizers supporting file in memory and on external devices using the PalmOS Virtual file system. With TealMover, you can view all the files on your organizer, and manage memory by renaming, deleting, and beaming files.

Contents

This archive contains the following files:

Program files:

TEALMOVR.PRC	The TealMover utility program
TPSETUP.EXE	Easy installer program (Windows only)

Document files:

MOVRDOC.PDF	This document in Adobe Acrobat (PDF) format
MOVRDOC.HTM	This document in HTML format (sans images)
MOVRDOC.PRC	This document in TealDoc format
REGISTER.HTM	TealPoint Registration form in HTML format
REGISTER.TXT	TealPoint Registration form in text format

Installing



Use the Palm Install Tool in the Palm Desktop to install the program file **TEALMOVR.PRC**.

This manual is provided in this archive as the PalmPilot document **MOVRDOC.PRC**. To read it, install it using the Palm Install Tool and read it with a Palm doc reader program like **TealDoc**.

Instructions on how to use the Palm installer are in the Palm Handbook that came with your Pilot, PalmPilot, or WorkPad. You can find the install tool either as a stand-alone program in your Palm install folder, in the Start Menu with the other Palm programs, or in the Palm Desktop program as an icon along the left-hand side.

On a Windows PC you can also use quick setup installer by double clicking on the **TPSETUP.EXE** installer program, and following the on screen prompts.

Overview

TealMover is the application Palm Computing “forgot” to include with every Palm. Standard Palm organizers have the ability to beam individual programs or delete programs along with all their associated data, but cannot beam data files or delete a single data file.

In addition, with PalmOS 4.0, Palm Computing added support in the operating system for reading files and folders in external media cards and devices such as MMC and SD cards, but curiously did not provide a utility to move and manage other data stored on the cards.

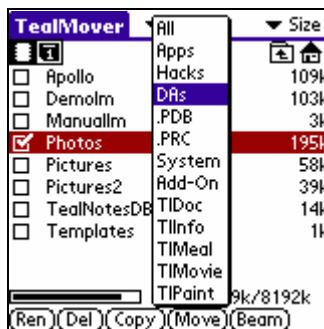
Addressing both needs, TealMover supports beaming and deleting of individual files and copying and moving files between main memory and external storage devices, as well as renaming and deleting files and folders on external cards.

Using the Program

Run the TealMover application by tapping on TealMover icon in the Palm applications launcher.

File List Screen

The file-listing screen lists all the files in the current category on the active device. Non-writeable files in ROM are listed with a dot next to their names. On this screen, you can select files and folders or perform actions on selected items.



Device Selection

If an external Virtual File System (VFS) –compatible expansion device is detected, a row of icons will appear at the top of the screen to allow you to select a device or navigate folder. From left to right, these are:

Memory Selector

Shaped like a memory chip, the memory selector shows files present in main organizer memory

External Card Selectors

Shaped like a memory card, the external card selectors show files present in external memory cards and devices. TealMover supports up to four external memory cards simultaneously.

Current Directory Path

When an external device is selected, the location of the current directory is shown in the center top of the screen. The location is shown as a "path", or the sequence of folders traversed to reach the current location from the start "root" location of the card.

Parent Folder

Selecting the Parent Folder icon moves the current folder back up one level to the folder which contains the current folder. The starting "root" folder has not parent folder.

Root Folder

Shaped like a house, the Root Folder sets the current folder location to the "root" starting location of the card.

File Filters

TealMover supports showing all or only a subset of the files at the current location based on the file type. These "filters" function like categories, in that you can switch views from one filter to another to see a different subset of the files. Unlike categories, filters are based on the characteristics of the files themselves, so files cannot be moved from one filter view to another. The category drop down appears in the center top of the screen, and consists of eight standard filters and five customizable ones.

All

Shows all files in the current location, and is also the quickest display option.

Apps

Shows standalone application programs, like TealMover or TealDoc.

Hacks

Shows all system extensions, commonly called "hacks" , like TealEcho or TealMagnify.

DAs

Shows all Palm Desk Accessories, such as TealTools popup utilities.

.PDB

Shows all Palm-database files. Note that files on external cards are detected as PDB or PRC based on their content, not just their name. Files not in Palm-format may not be inaccurately detected as PDB.

.PRC

Shows all Palm program and resource files. Note that files on external cards are detected as PDB or PRC based on their content, not just their name. Files not in Palm-format may not be inaccurately detected as PRC.

System

Shows files detected as created or associated with programs created by Palm Computing. Palm files have Creator IDs in all lower case letters.

Add-On

Shows files and formats not created by Palm Computing. Non-Palm files have Capital letters in their Creator IDs.

Custom File Filters

Five file filters can be modified and renamed in the program Settings Menu (below). The default initial five filter in these slots are:

TealDoc

Shows all TealDoc and Generic Doc files.

TealInfo

Shows TealInfo folios.

TealMeal

Shows TealMeal restaurant databases.

TealMovie

Shows TealMovie movies

TealPaint

Shows TealPaint image databases.

Settings

The **Settings Menu** can be brought up with the “Settings...” item on the drop down menu. Two checkboxes adjust behavior of the file display list.

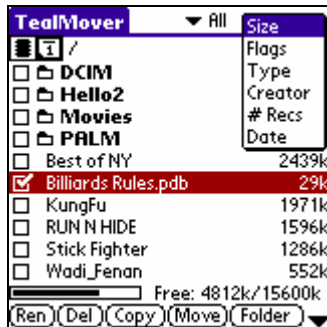
The **Alphabetize List** option can be turned off to speed up loading of files in the list. The **Remember Last Device** option determines whether the last expansion card accessed is restored the next time the program is run. When off, the current device is reset to internal memory each time TealMover is run.



The five custom file filters can be modified and renamed in the fields that follow. For each filter, both a Type ID and Creator ID can be specified. All Palm-format files have a four-letter Type ID and Creator ID associated with them. Files associated with a single program typically have the same Creator ID as the program, while most Type ID's are determined by the program developer.

Files to be listed with a particular filter can be restricted to those that match either a Type ID, Creator ID, or both. To specify a value that matches all files in either the Type ID or Creator ID fields, enter a single asterisk (*) in the field. For instance, all Palm OS library files have a type 'libr'. To create a “libraries” filter that matches all code libraries, enter “libr” in the Type ID field, and “*” in the Creator ID field.

Data Display



Next to each entry in the file list, TealMover shows data about the file. The Data selector appears in the upper right corner of the screen.

Size

Shows the size of the file in kilobytes (1024 bytes).

Flags

Simultaneously shows four-letter code indicating characteristics about the file:

B: The backup-bit for the file is set. If set while this file is in main memory, this file will be synchronized with the desktop PC each time it is changed using the default backup mechanism. Databases with custom conduit components on the PC-side (such as standard application databases) do not use the default backup mechanism.

D: The file is a database file. All palm-format files are either databases (record-based data) or resources (programs and name-based data for programs).

R: The file is in ROM. If set, the detected file is flag as being non-writable because it is in ROM. This includes operating system (OS) ROM, files placed into OS ROM using FlashPro and MemPlug, or files in Handspring Visor flash cards, which hook into the operating system as OS ROM rather than through VFS.

O: The file is current open, meaning that it is in use by another application and cannot be moved or modified.

Type

Shows the four-letter identifying code associated with this type of file. Applications use the Type value to discern how to use a particular file.

Creator

Shows the four-letter identifying code for the application registered with Palm Computing as being associated with this type of file. Palm OS uses the Creator ID to identify which applications own which files.

Recs

Shows the number of records of data associated with the current file.

Date

Shows the last modification date stored in a Palm-format file's header.

File Selection and Navigation

To select a file, tap on its name or on the checkbox to the left of its name. To select a folder, tap on the checkbox next to the folder name. Tapping on the folder name itself instead shows the list of files located inside that folder.

Actions

TealMovie supports different actions depending on the current selection. Actions appear at the bottom of the screen corresponding to the current selection. To perform an action, tap on the appropriate button after selecting a file or folder.

Rename

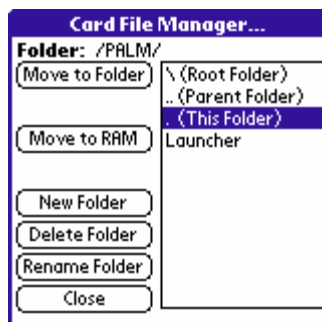
Renames a selected file or folder. Note that when renaming Palm files in external memory cards, that such files also contain an internal "Palm" file name, which is used for the file when it is copied into main memory. This name cannot be changed when the file is in an external card.

Delete

Deletes a selected file or folder. Folder must first be emptied of files and other folders before they can be deleted.

Copy

Copies the selected file to another location. Files in main memory will be copied to the last folder viewed on the external card. Files on an external card can be copied to main memory or into another folder on the same card.



When copying files from the external card, the **Card Manager Window** will appear, allowing you to select a destination for the file. Palm-compatible files can be copied to RAM, while all files can be copied to another folder. To select a destination folder, tap in the folder list on the right hand side, which initially lists any subfolder in the current location, as well as the parent and root directories. Entries in this list can also be double-tapped to "navigate" into another folder not directly above or below the source directory.

Move

Similar to the Copy command, the Move button deletes the source file after the copy operation. If moving a file from and to the same external device, there must be enough free space to store a temporary copy of the file.

Beam

Beams a selected file to another Palm device. Files must not currently be in use (open) by another program to be beamed. Since TealMover is "open" when inside TealMover, use the palm application launcher instead if you wish to beam TealMover to another Palm.

New

Creates a new Folder in the current location on an external card. Palm main memory does not support the creation of folders.

Appendix A – Compatibility

Handera and Sony Clie

TealMover supports the OS4.0 Virtual File System, and should correctly function on any device which supports VFS. The Handera 330 and Sony Clie organizers ship with OS 3.5, which implement an earlier version of VFS which should be compatible. Both units support high resolution fonts which are recognized by TealMover.

MemPlug

TealMover has limited support for the MemPlug Springboard module for Handspring Visors. The MemPlug system software is not VFS-compatible, so files cannot be copied to and from main memory in TealMover, but the MemPlug comes with a utility for this purpose and other operations are supported. Third party VFS-compatibility libraries for MemPlug units are available which can add full VFS support to MemPlug units.

Appendix B - Revision History

Version 1.30 –August 16, 2002

- Fixed responsiveness of double-tap on folder names in card file manager
- Added color to icons and checkboxes on file list screen
- Added support for OS 5.0+ high resolution icons
- Added check for VFS file name legality before copies

Version 1.20 –December 14, 2001

- Fixed moving of multiple files from VFS cards
- Added automatic conversion of names to VFS-compatible ones when copying to card

Version 1.10 –October 25, 2001

- Increased loading speed on VFS cards
- Added new "none" detail option for fast scrolling
- Added customizable file filters
- Added HandEra full screen compatibility
- Added ability to do direct copies between arbitrary folders
- Added ability to beam files directly from VFS cards
- Fixed graffiti seek scanning upwards in list
- Fixed "Add-On" file filter
- Fixed display of type and creator of files on VFS with no records
- Fixed update of buttons when switching devices

Version 1.03 –July 19, 2001

- Added workaround for bug in Handera VFS library for card-to-card file copies

Version 1.00 –July 4, 2001

- Initial full release

Appendix C - Credits

Manual by Vince Lee and Tex Tennison

Appendix D - Contact Info

TealMover by TealPoint Software
©2001 All Rights Reserved.

TealPoint Software
TealMover Registration
454 Las Gallinas Ave #318
San Rafael, CA 94903-3618
We look forward to hearing from you.

Please visit us at www.tealpoint.com, or email us at support@tealpoint.com.

Appendix E - Registering

Currently, you may register by snail mail, electronically through our website at www.tealpoint.com with a credit card and a secured server, or through PalmGear HQ at 1-800-741-9070. For the first option, the enclosed registration form is provided for your convenience. You may use this form or simply send the following to the address above.

- Product Name (Important!)
- E-Mail Address
- HotSync User Name (Your user name is needed to generate a working passkey. It can be found on the main screen of the HotSync application on the handheld in the right hand side of the title bar. On Palm OS2.0 or older units, it appear as part of the "Welcome _____" text)
- Check (drawn off a US Bank) or US Money Order for (\$11.95 US) to TealPoint Software

TealPoint Software
TealMover Registration
454 Las Gallinas Ave #318
San Rafael, CA 94903-3618

Appendix F - Products

Visit us online for our complete product line, including:

TEALAGENT (<http://www.tealpoint.com/softagnt.htm>)

A PC-based Palm data converter, installer, and web clipper which formats local, network, and web-resident data into standard Palm formats.

TEALDOC (<http://www.tealpoint.com/softdoc.htm>)

Powerful reader for Palm documents, e-books, and newspapers, supporting advanced features such as pictures, links, and flash cards.

TEALECHO (<http://www.tealpoint.com/softecho.htm>)

Digital "ink" lets you see what you write, vastly increasing graffiti writing speed and accuracy. No more writing blind!

TEALGLANCE (<http://www.tealpoint.com/softglnc.htm>)

Pop-up utility show time, date, appointments and to-dos, and other useful information at powerup. See your day at a glance.

TEALINFO (<http://www.tealpoint.com/softinfo.htm>)

A system for creating and browsing interactive databases, reference works, and mini-application folios; a handheld reference library.

TEALLAUNCH (<http://www.tealpoint.com/softlnch.htm>)

A pop-up application launcher and mapping utility for launching apps and special functions from pen taps, graffiti strokes, or button presses.

TEALLOCK (<http://www.tealpoint.com/softlock.htm>)

Secure automatic locking program with optional data encryption and numerous activation and customization options.

TEALMAGNIFY (<http://www.tealpoint.com/softlens.htm>)

An ever-ready magnifying glass that works with most any program, TealMagnify saves your eyes when looking at tiny text.

TEALMASTER (<http://www.tealpoint.com/softmstr.htm>)

A supercharged Hackmaster replacement with 100%-compatibility and enhanced stability, configuration, diagnostic and activation features.

TEALMEAL (<http://www.tealpoint.com/softmeal.htm>)

A personal restaurant database and selection wizard. Keep a database of your favorites and easily find them by type or category.

TEALMEMBRAN (<http://www.tealpoint.com/softmemb.htm>)

Memory monitor and stack manager which helps identify conflicts and greatly improves stability running multiple hacks and drivers.

TEALMOVER (<http://www.tealpoint.com/softmovr.htm>)

File management utility for beaming, deleting, renaming, and copying files both in memory and on VFS-compatible storage cards.

TEALMOVIE (<http://www.tealpoint.com/softmovi.htm>)

High-quality multimedia system with video and synchronized sound. Includes audio/video player and Windows AVI converter program.

TEALNOTES (<http://www.tealpoint.com/softnote.htm>)

Insert freehand graphic "Sticky notes" into memos, to-do lists, address book entries--almost anywhere you currently have editable text.

TEALPAINT (<http://www.tealpoint.com/softpnt.htm>)

The most powerful paint and sketch app on Palm OS handhelds, featuring 16 tools, 16 patterns, 12 brushes, color, and desktop image conversion.

TEALPHONE (<http://www.tealpoint.com/softphon.htm>)

A powerful Address Book replacement with superior interface, display, search, and indexing options.

TEALPRINT (<http://www.tealpoint.com/softprnt.htm>)

The all-in-one text and graphic printing solution for Palm OS, supporting infrared, serial, and HotSync printing to any Windows printer.

TEALSCRIPT (<http://www.tealpoint.com/softscrp.htm>)

An improved, tuneable, Graffiti text recognition system that lets you modify the handwriting recognition to suit your handwriting.

TEALTOOLS (<http://www.tealpoint.com/softtool.htm>)

Six pop-up desk accessories, including a calculator, clock/stopwatch, preferences panel, editing panel, memopad, and a file/backup manager.

Appendix G - Disclaimer

We at TealPoint Software are committed to providing quality, easy-to-use software. However, this product is provided without warranty and the user accepts full responsibility for any damages, consequential or otherwise, resulting from its use.

This archive is freely redistributable, provided it is made available only in its complete, unmodified form with no additional files and for noncommercial purposes only. Any other use must have prior written authorization from TealPoint Software.

Unauthorized commercial use includes, but is not limited to:

- A product for sale.
- Accompanying a product for sale.
- Accompanying a magazine, book or other publication for sale.
- Distribution with "Media", "Copying" or other incidental costs.
- Available for download with access or download fees.

This program may be used on a trial basis for 30 days. The program will continue to function afterwards. However, if after this time you wish to continue using it, please register with us for the nominal fee listed in the program.

Thank you.