



CardBackup

V1.2

For PalmOS™

by



www.jkWare.com

Instruction Manual

09/05/2001

About CardBackup

CardBackup is a utility that will backup the databases on a PalmOS™ device and store them on an expansion card. The current release supports the Virtual File System (VFS) manager that was introduced in PalmOS 4.0, which includes the m500 and m505. However, CardBackup should work on any device that supports VFS including the Handera and Sony devices.

CardBackup will allow multiple backups to reside on an expansion card. When it restores it will restore all the databases that were backed up, overwriting the same databases on the Palm device. The restore is additive. That is, it will not erase the entire contents of the Palm before doing the restore. So any databases that were installed on the device after the backup was made will not be removed when a restore is performed.

Main Form

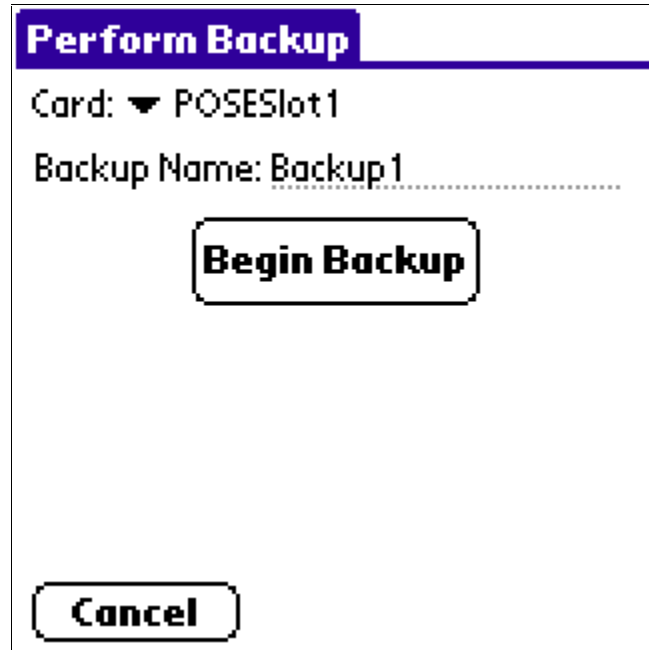
Backups:	Date:	Time:
sbkup	8/31/35	12:34 pm
sbkup125	8/8/35	2:14 pm
sbkup123	8/7/35	2:51 pm
sbkup12	8/6/35	8:57 am
sbkup1	7/31/35	8:15 am
Backup1	7/16/35	10:03 am

The main form, shows all the main functionality of CardBackup. It also shows all the backups currently stored on the inserted cards.

Buttons

- “Backup Now” Press this button to go to the Backup form to begin a backup.
- “Schedule” Press this button to go to the Schedule form where you can schedule automatic backups.
- “Restore” Select a backup and press this button to go to the Restore form to restore the backup to the Palm.
- “Delete” Select a backup to delete and press this button to delete it.
- “Setup” Press this button to go to the Setup form where there are utilities to make using CardBackup easier and setup for mounting software

Backup Form



Perform Backup

Card: ▼ POSESlot1

Backup Name: Backup1

Begin Backup

Cancel

The Backup form is where you perform actual backups. First select a card from the popup list, name the backup and then press “Begin Backup” to perform the backup. If a backup of the name that you entered is already on the card it will ask if you want to overwrite the backup. If you choose to overwrite, CardBackup will actually create a temporary backup on the card and then delete the old one and replace it with the temporary backup (if there is enough space on the card). That way you should not lose the old backup in case the new one to overwrite it is not done successfully.

Buttons

- “Begin Backup” Press this button to begin the backup after setting.
- “Cancel/Finish” Press to go back to the Main form.

Schedule Form

Schedule Backup

☒ Perform Scheduled Backups

Backup Name: **sbkup**

Backup on what days?:

Sun Mon Tue Wed Thu Fri Sat

At what time?: **2:30 am** Set

☒ Turn off when finished

Save

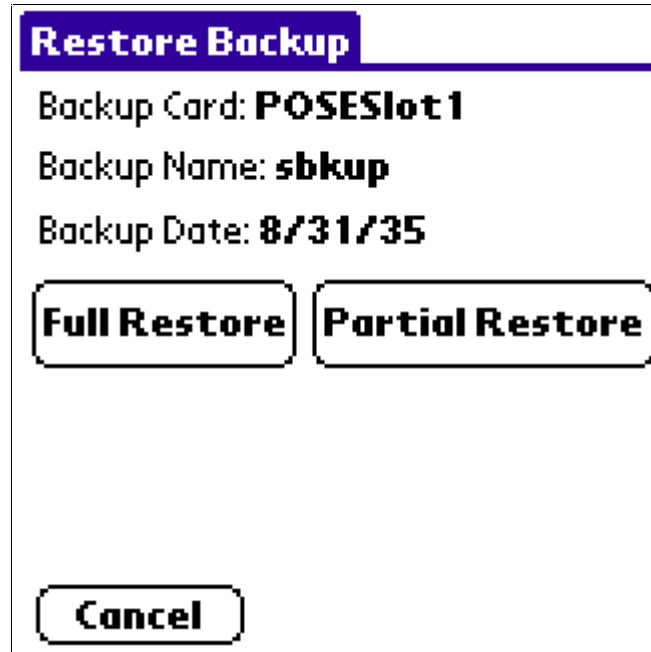
The Schedule form is where you can schedule backups to happen automatically so you don't have to worry about backing up your Palm on a regular basis. You can select the days and time on which you want the backup performed.

First you must check the "Perform Scheduled Backups" checkbox to be able to see the rest of this form.

To Setup scheduled backups:

1. Enter the name of the scheduled backup. Each time it backs up your Palm device it will use this name and overwrite the previous scheduled backup. That way you will always have the most recent backup.
2. Select the days on which you'd like to perform backups. For instance you may mainly use your palm during the week and would choose to backup every weeknight. Or you may only want to backup at the end of the week and only choose Friday.
3. Select the time that scheduled backup will be performed. Usually you would choose a time that your Palm is typically not in use. For example 4am when your asleep. When the time comes the Palm will automatically turn on and perform the backup then turn back off.
4. Check the "Turn off when finished" to force the Palm to turn off after a scheduled backup.
5. Hit the "Save" button. If you do not hit the save button all the settings for scheduled backups will not be saved.

Restore Form



Restore Backup

Backup Card: **POSESlot 1**

Backup Name: **sbkup**

Backup Date: **8/31/35**

Full Restore **Partial Restore**

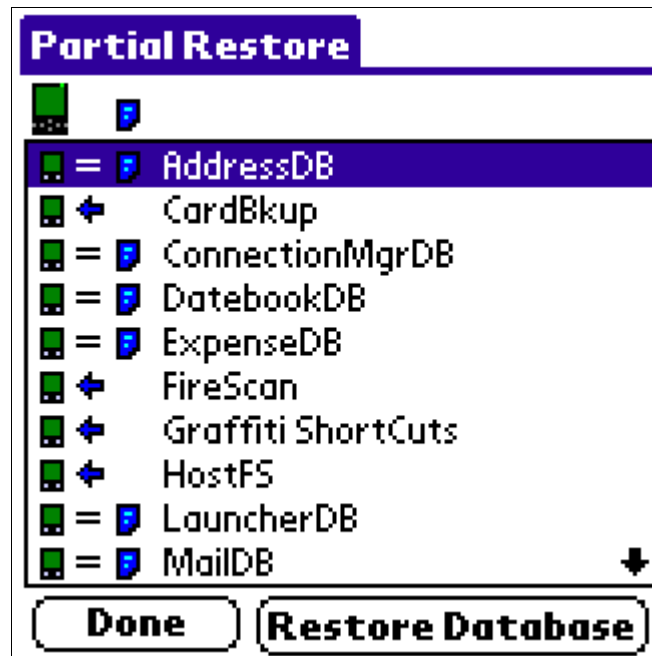
Cancel

The Restore form is where you will restore a backup. It will show the details of the backup that was selected on the Main form when you hit the “Restore” button.

Buttons

- “Full Restore” This will cause all the databases in the backup to be restored to the Palm device.
- “Partial Restore” Press to go to the Partial Restore form where you can choose the exact database you would like to restore from the backup. It will also show you the difference between what is in your Palm memory and what in the selected backup.
- “Cancel” Return to the Main form.

Partial Restore Form



The Partial Restore form is where you can select a particular database from the backup and restore it to the Palm device. This allows you to say restore the Address book "AddressDB" without restoring the rest of the backup and overwriting the rest of the databases.

The arrow points to the where the newer database is (Palm or Card). If the equal sign is there then that means they are the same. If either the Palm or Card does not appear on the list it means that database is not on them. For example in the above screenshot the database FireScan is only in Palm memory and not on the card.

Buttons

- "Restore Database" Select a database to be restored and press this button to restore it.
- "Done" Return to the Main form.

Setup Form

CardBackup Setup

Card: ▼ POSESlot1

Copy CardBackup to Card

Make Startup on Card

Restore Old Startup on Card

☐ Using Mount Software

Mounted Path:
/Palm/Programs/MSMount/
.....

Done

The Setup form has some special functions to help you use CardBackup.

Buttons

- “Copy CardBackup to Card” This will copy CardBackup to the selected card. This will make CardBackup appear in the Launcher when the card is inserted into the device.
- “Make Startup on Card” This will make CardBackup the Startup Application on the card. Which means that when the card is inserted CardBackup will automatically run. You can use this to make a card a dedicated “backup” card. For easy use.
- “Restore Old Startup on Card” If you make CardBackup the Startup on the card it will automatically make a backup of the current Startup Application. If you push this button it will restore the old Startup Application.
- “Done” Go back to the Main form.

Check “Using Mount Software” if you are using mount software to ‘mount’ Palm applications and databases into palm memory. Once you’ve checked this box make sure you set the mount directory to the same one your mounting software is mounting.

SOFTWARE LICENSE AGREEMENT

jkWare, Inc (Publisher) grants to the Licensee purchasing this software a non-exclusive, non-transferable license to use the software and documentation, if any, for use in accordance with this License. This License allows use of the software by the number of users and on the platform specified by the description provided at time of purchase.

The Licensee is cautioned that copyright laws apply and that the software shall be classified as proprietary material.

The software is supplied as is. jkWare, Inc disclaims all warranties, expressed or implied, including, without limitation, the warranties of merchantability and of fitness for any purpose. Neither jkWare, Inc nor anyone else who has been involved in the creation, production or delivery of this product assumes any liability for damages, direct or consequential, which may result from the use of the software.

If the software or written materials are defective the Licensee, and not jkWare or its dealers, distributors, agents, or employees, assume the entire cost of any and all necessary servicing, repair, or correction.