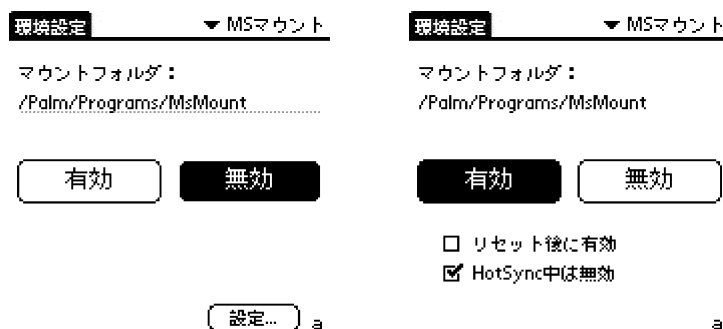


MSMount - Memory Release Campaign

MSMount allow you to access palm applications and databases that are on the Memory Stick or SD card as if they are on the DRAM of Palm device. With thisMSMount, an application that is not support Virtual File System can access to Memory Stick or SD card. You can move large databases (ex. dictionary) from DRAM of Palm device into Memory Stick and make much free space on memory.

You can download MSMount from [here](#).



Installation

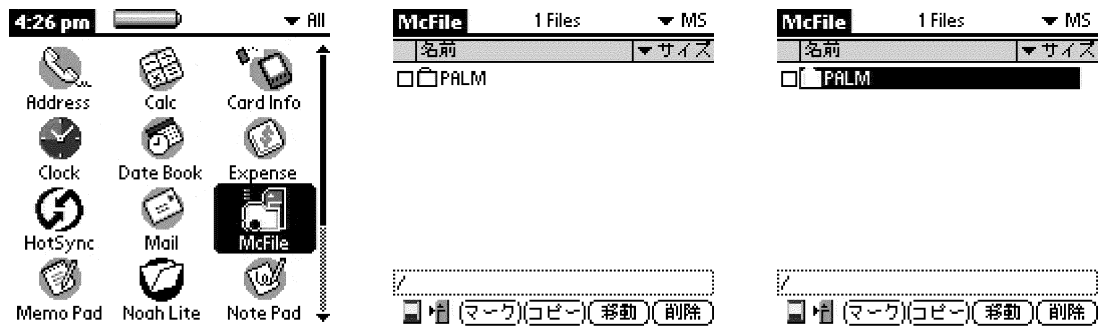
Download MSMount10.zip from above link and unzip it. Install MSDW.prc and MSMount.prc into Palm device with Install Tool. MSMount_jpJP.prc is for Japanese locale devices and you do not need to install it.

Setting

Create a folder on Memory Stick or SD card for mounting point and copy Palm applications and databases into it.

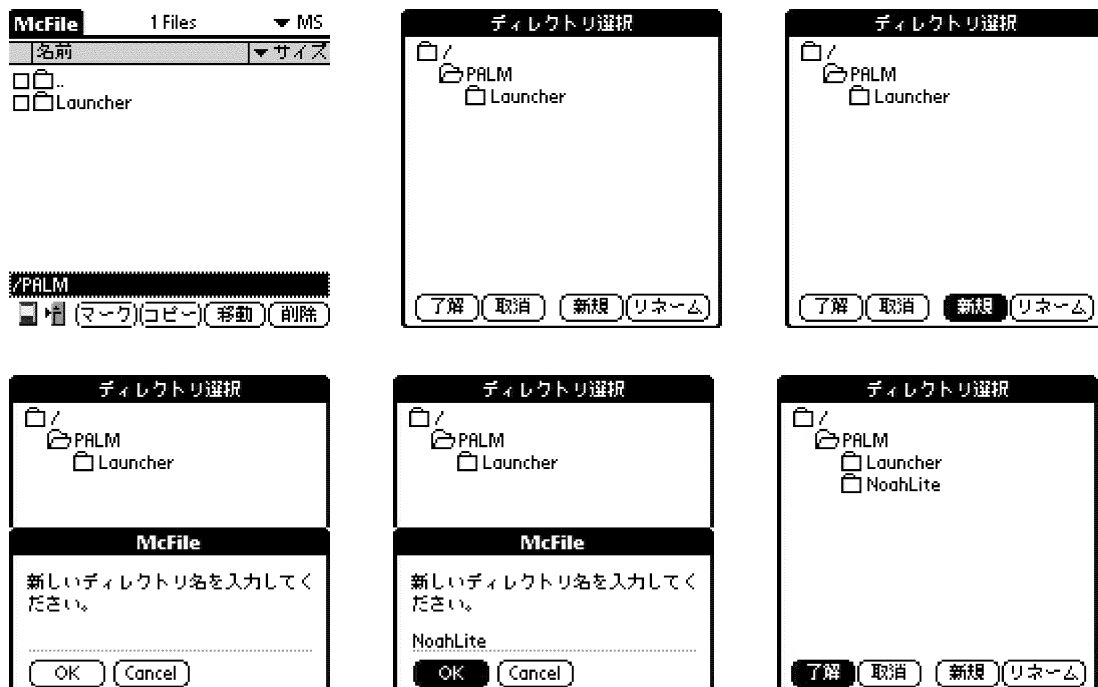
[McFile](#) or [Filez](#) allows you to manipulate files on Memory Stick or SD card. Following example is using McFile application.

MSMount

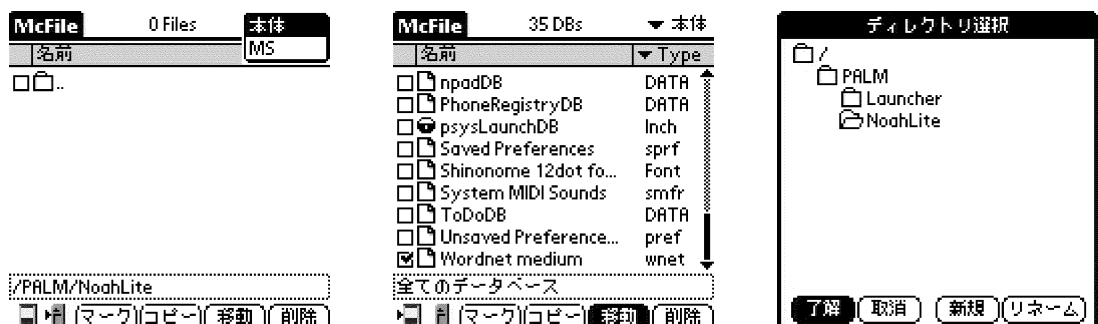


Start McFile application and make a folder thatMSMount will mount. In this case,NoaLite folder is made under /Palm.

Tap the lower area that shows current folder, Directory selection dialog will pop up. New button of this dialog will create a new folder.



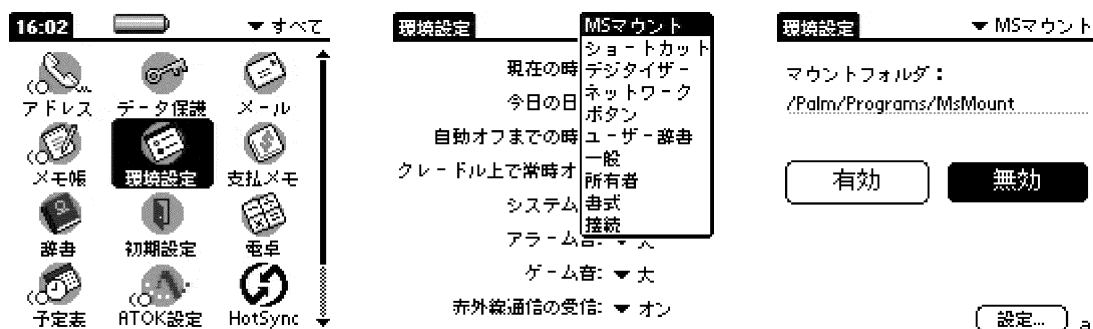
Next, move applications and databases that you want to move from internal memory to Memory Stick or SD card. Check the boxes and press move button.



MSMount



You will find MSMount panel from preference application.



Specify the folder that you create above and tap Enable button.



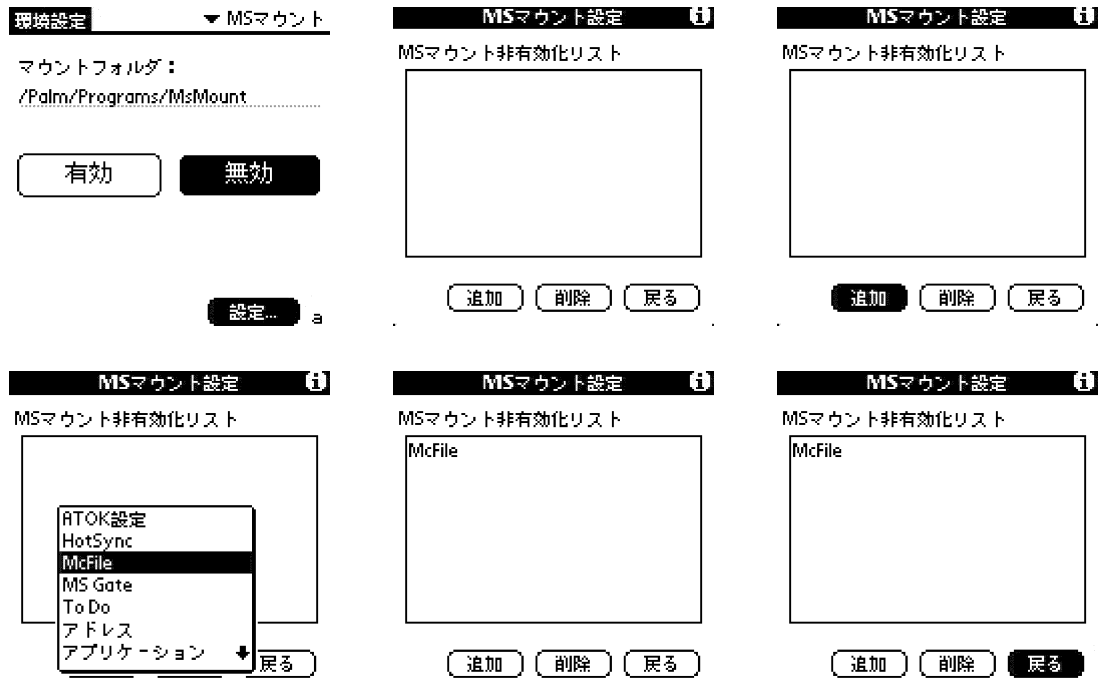
Mount path can only modified while MSMount is disabled state. If you want to modify mount path, you need first to disable MSMount.

After make MSMount Enable, applications and databases that are placed at mount path are available as if they are on the internal memory.

There are some application that does not work well with MSMount. For these applications, MSMount has a ability to disable it's function automatically when they are in working.

Before setting MSMount these applications, disable MSMount. You will find the setting button left bottom corner. With MSMount setting dialog, you can add, edit or remove application list for incompatible with MSMount.

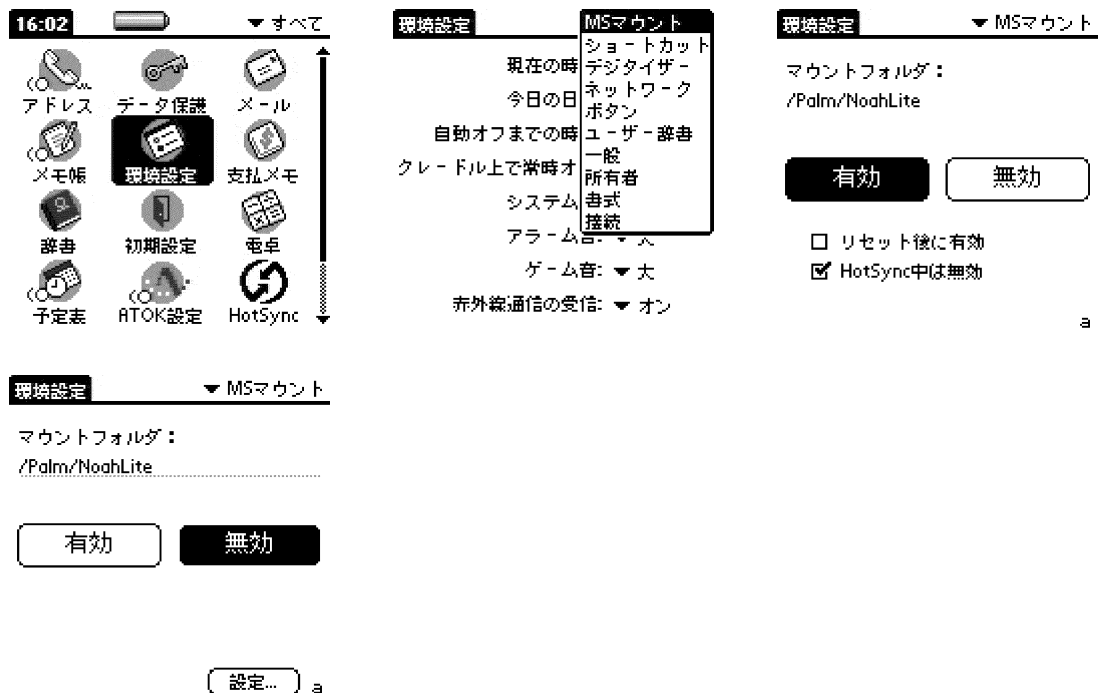
MSMount



In this example, McFile application is appended into list for non-compatible withMSMount. After this setting, McFile application does not show up mounted databases even ifMSMount is enabled.

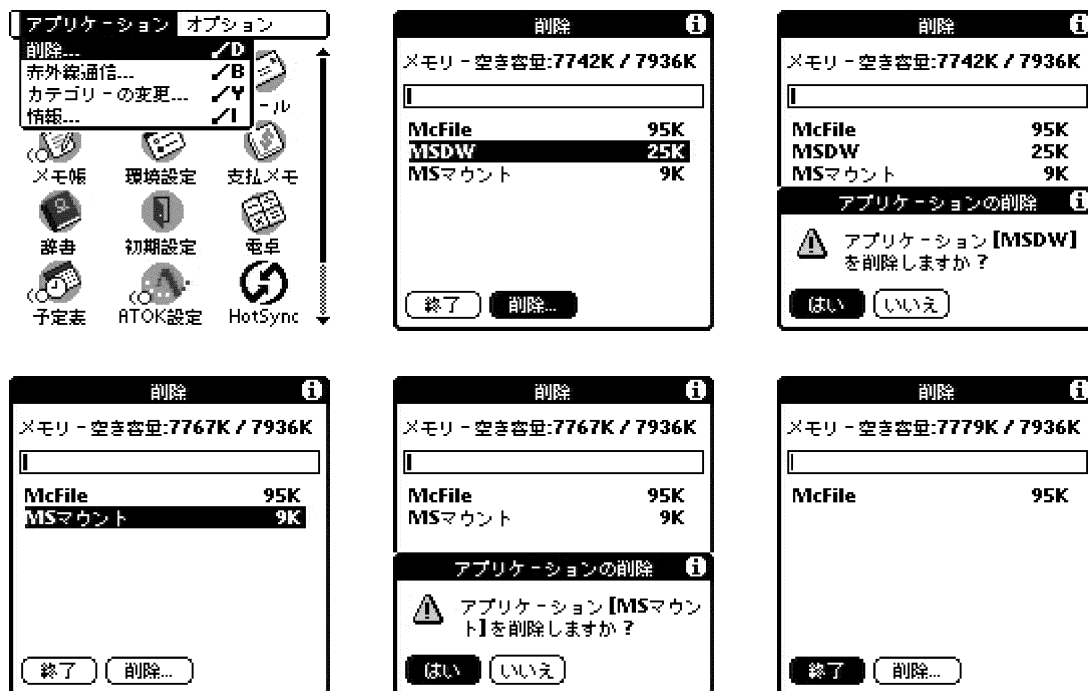
Uninstallation

First, disableMSMount from MSMount panel.



Delete MSDW and MSMount from delete option of default launcher.

MSMount



Version up

Select MSMount panel from Prefs and push "disable" button.

Install the latestMSDW.prc and MSMount.prc.

Memo

Please do not put databases that is accessed from non compatibility Palm application

If you have some trouble withMSMount, **try to stop using HACK software and Clock up software** (ex. Cruise Control)

MSMount will copy resource and database record on demand into internal memory. When this copy fails, error sound will be played. On this case, please increase space for internal memory.

Do not specify applications as non-compatible that will access tpsysLaunch database such as default launcher.

When you have a problem caused by insufficientdynamic heap, try to reduce the number of mounted files.

History

Version 1.0 2001/08/04 Release Candidate



nagamatu@p.chan.ne.jp